

Information Booklet for Nursery Parents



2022-2023

Welcome to Allesley Primary School Nursery Class



We aim to create a happy, secure and stimulating environment for your child, in which they can learn and have fun.

We believe that children learn through exploration, practise and discovery.

We hope our parents will work in partnership with us to provide children with the very best learning atmosphere.

The information in this booklet is intended to answer some questions that you may have about your child starting with us.

VISION STATEMENT - ETHOS AND VALUES

Working Together for a Bright Future.

Allesley Primary provides an environment that opens up a world of learning and takes our children on a journey of discovery and challenge towards achieving personal excellence.

We aspire to ignite a passion for life-long learning and to develop curious, independent individuals who embrace challenge.

We aim to create positive, self-motivated individuals who take responsibility for their actions and who understand their role in our community and the world they share with everybody. We value everyone as an individual and encourage respect for others.

Allesley Primary School is a place where all can grow, achieve and endeavour to be the best they can be within a safe and caring atmosphere of teamwork, support and cooperation.

Together we learn.

Together we achieve more.

The core values we hold close to our hearts at Allesley are:

- Honesty
- Respect
- Perseverance
- Positivity
- Independence
- Compassion

These core values are the golden thread that are woven into our daily journey towards achieving Personal Excellence.

At Allesley Primary School we feel our core values are very important as they are the principles that guide our lives. To feel valued is a special thing and something we want to make sure everyone experiences at Allesley.

Millie Pugh
year 6. 2018

Our Nursery

Teacher: Mrs O'Grady

Supported by : Mrs Carpmail and Mrs Faries

The teacher is responsible for the organisation and day-to-day running of the unit but all staff work together as a team to ensure your child's first experiences of school are positive and provide a broad and balanced educational foundation for his/her future.



The nursery has its own entrance, fitted with a security lock. A member of staff is responsible for letting parents and children in and out.

School Times

Monday, Tuesday, Thursday and Friday
8.50am—3.20pm

Wednesday Morning 8.50am—12 noon
Wednesday Afternoon 12.00 noon—3.20pm

Lunchtime

Children can bring their own packed lunch or parents may wish to pay for a school meal at £2.30 per meal

Please try to make sure your child is at nursery on time every day as it can be very unsettling for a child arriving late, especially if they miss the beginning of an activity.

Your child will also appreciate it, if you could be on time to collect them at home time. They can get very tired and they may be upset if you are late.

Please let us know of any reasons for absence, preferably on the same day. You can telephone the school or speak to your child's teacher.

School telephone number 02476 402611 option 1



Clothes

There is no compulsory school uniform for nursery children, but many parents like to purchase a royal blue sweatshirt with the school logo on. These are available from:

Andy Blair Schoolwear on Barker's Butt Lane or The School Wear Company (formally Mrs T) on Winsford Avenue. Our school uniform is a grey skirt, trousers or shorts, a white polo t-shirt and black shoes. Children will also be permitted to wear leggings and joggers. (Further information will be shared at the induction meeting).



Our aim is to enable all children to become independent in changing their clothes and we ask you to consider this when buying your child's uniform or school clothes. Please buy shoes with Velcro fasteners.

PLEASE, PLEASE, PLEASE
Label ALL your child's clothes.
School sweatshirts really do all look the same!

Please remember some nursery activities are **MESSY** and whilst we endeavour to protect your child's clothes we cannot guarantee that accidents will never happen. If your child should get paint or glue on their clothes, soak in cold water overnight before washing.

Our PTA have 'pre loved' uniform for sale for as little as £1 per jumper. Please e-mail allesleyprimarypta@gmail.com to order uniform

Outdoors

We offer the children many opportunities to take their learning outdoors and some children will make the most of being outside whenever they can.

We strive to offer opportunities for both adult-led and child initiated activities in all kinds of weather. This will often result in dirty, muddy clothes, but remember - it's not dirt, it's learning!



We provide waterproof trousers and wellies for children to wear when necessary.

The Foundation Stage Curriculum

In nursery we follow the Foundation Stage Curriculum.
This is organised into seven areas of learning. These are:

Personal, Social and Emotional Development

- Self-Regulation
- Managing Self
- Building Relationships

Communication and Language

- Listening, Attention and Understanding
- Speaking

Physical Development

- Gross Motor Skills
- Fine Motor Skills

Literacy

- Comprehension
- Word Reading
- Writing

Mathematics

- Numbers
- Numerical Patterns

Understanding the World

- Past and Present
- People, Culture and Communities
- The Natural World

Expressive Arts and Design

- Creating with Materials
- Being imaginative and Expressive

No area of learning stands in isolation, and the activities your child is offered in nursery will often cover more than one of these



We also take into account how a child engages with other people and their environment.

We look at the Characteristics of Effective Learning which are:

Playing & Exploring

- Finding out & Exploring
- Using What they know in their play
- Being willing to have a go

Active Learning

- Being involved and concentrating
- Keeping on trying
- Enjoying achieving what they set out to do

Creating & Thinking Critically

- Having their own ideas
- Using what they already know to learn new things
- Choosing ways to do things and finding





Encouraging Independence

Here are some of the ways in which you can help your child to grow in confidence while they are at school:

Please buy clothes that are easy to take off and put on, e.g. With elasticated waists, Velcro fastenings etc. and encourage your child to dress and undress themselves.

Teaching your child how to put on their own coat and how to turn sleeves from inside out is also a great help.

Help them to use the toilet properly, including flushing, and to wash and dry their hands.

If your child can use a tissue, this will be a great help too .

Gradually over the year we also encourage the children to take responsibility for their own belongings, including hanging up their coats and putting things away in their drawer.

Appointments and holidays

If your child has an appointment with the doctor or dentist or you are going on holiday in term time, please let us know in advance. You can leave a message on the absence line 02476 402611 option 1

Possessions

Please do not let your child bring toys to nursery unless requested by the teacher. They may bring in birthday cards or a present to show the other children if you wish.

Watches and jewellery **should not** be worn to nursery. They can get lost or broken.

If your child has pierced ears, please make sure they have studs. Other types of earrings can be very dangerous.

Letters

Your child will be allocated a drawer for his/her own personal use. Letters from school giving information about school activities will be placed in this drawer, so please make a habit of checking it regularly. Please sign up to our school Parentmail system (form enclosed in the starter pack) and download the Parentmail app. We circulate our weekly newsletter on Parentmail and the system allows us to text parents with any urgent messages too. If possible hand any correspondence to a member of staff.

Fruit Scheme

The Government Fruit Scheme provides every child with a piece of fruit for mid-session snack. A drink of milk or water is also provided for the children. Please do not send any other fruit or snacks into school.

Water Bottle

Children are welcome to bring in their own named water bottle but please only send in water; no juice or squash.



Health

Do let us know about any helpful medical information (e.g. conditions like asthma, diabetes, allergies, etc.)

If your child needs to use an inhaler, you must fill in a form at the school office before we can administer any medication.

With some illnesses it is advisable that your child stays away from school for a certain number of days, as this prevents the spread of infection.

Sickness and Diarrhoea: To be completely clear for at least 48 hours.

Chicken Pox: 5 days from when the rash can be seen

Impetigo: Until lesions are crusted and healing

Mumps: 5 days after onset of symptoms

German Measles: 6 days from when the rash can be seen

Whooping Cough: 21 days after whooping has started or 5 days after starting antibiotic treatment

Slapped Cheek: No exclusion but please advise the teacher as soon as possible

COVID-19 If your child tests positive for COVID, please contact the school office and keep your child at home.

These are only the minimum number of days. Your doctor's advice is the best guide to when your child may return to school.

Please ensure that the contact numbers we have in school are up to date so that should your child be taken ill in school or have an accident we can contact you as soon as possible.

It is your responsibility to check for head lice and children with head lice should not be sent to school before treatment has been given.

PTA

The school has a well supported Parent Teacher Association who would welcome your support. Look out for the latest PTA news on the weekly school newsletter and come along to the next meeting, everyone is welcome!



Links with the rest of the school

Although the nursery is part of Allesley Primary School, children do not automatically move into reception. If you would like your child to attend Allesley Primary School next year you will need to register your application with Coventry City Council School Admissions Team. The appropriate forms will be available during the Autumn Term.

As the year progresses we build up links with the rest of the school in a variety of ways in order to help the transition from nursery to reception for your child. These include going to show teachers in other parts of the school work we have done, sometimes going to special assemblies and visiting the Reception classrooms.

Finally

Be assured that we, like you, want the very best for your child. We will do all we can to ensure that your child is happy and that their nursery year equips him/her with the skills required to make the most of his/her future education.

We look forward to welcoming you and your child into our nursery.

Blue Birds

Blue Birds is a school run wraparound scheme which offers before, afterschool, lunchtime and additional paid for sessions for nursery children in a safe, familiar environment.

Before school Session 7.45am -8.55am £4.50 with toast / cereal and a drink

Afterschool session 3.20pm—6pm £8.50 snacks, fresh fruit, vegetables and a drink available

If you wish to apply for a place for your child, would like more information or have any questions please contact the Wraparound team on 0246 407585 between 7.45—9am or 3.30pm—6pm or e-mail bluebirds@allesley.coventry.sch.uk

We currently have waiting lists on certain days. If you need childcare please contact us as soon as possible

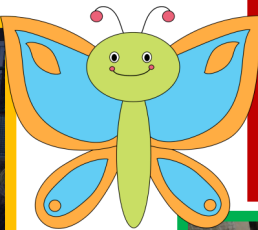
You will receive a termly invoice for your child's Blue Bird sessions. Fees are due in advance of sessions but you can pay on a weekly, monthly or half termly basis.

Blue Bird fees can be paid by childcare voucher, Government Tax-Free Childcare Accounts, or by logging onto our school cashless system, Pay 360 education payments.

Information on how to set up a Pay360 account will be sent to you in September.

Notes Page

We all have lots of fun at nursery.



I'm sure you will have fun too!

